

TEL : 82-53-668-0255  
 FAX : 82-53-668-0277  
 AFS : RKRRYNYX  
 E-mail : aais@korea.kr  
 Web : http://ais.casa.go.kr

**Ministry of Land, Infrastructure and Transport**  
**Office of Civil Aviation**

11, Doum 6-ro, Sejong-si, 30103, Republic of KOREA

**6/21**  
**3 JUN 2021**

## Implementation of Standard Taxi Routes(STR) at Incheon International Airport(RKSI)

### 1. INTRODUCTION

In order to prevent taxiway incursion and improve airport taxi performance “Follow the Greens“ have been implemented at IIA for H24 a day. Despite the operation of Follow the Greens for H24, taxiway incursions have been frequently occurred from cargo flights operating on taxiway in maneuvering area.

In order to prevent taxiway incursion caused by flight crew’s confusion, standard taxi routes(STR) are being designated at RKSI. Standard taxi route will be designated to departure and arrival taxi route of cargo flight to/from the cargo apron.

### 2. STANDARD TAXI ROUTE FOR CARGO FLIGHT

#### 2.1 Departure routes

Name	Taxi Route Details	Remarks
CARGO TRANSITION 15R	CGO APRON → Turn Right on <b>D</b> → Turn Left onto <b>K</b> → Hold At Holding Point <b>RWY 15L</b> on TWY <b>K</b> → Turn Right on <b>C</b> → Turn Left on <b>L</b> → Hold At Holding Point <b>RWY 15R</b>	Route for RWY 15R Departure
CARGO TRANSITION 16	CGO APRON → Turn Right on <b>D</b> → Turn Left onto <b>K</b> → Hold At Holding Point <b>RWY 15L</b> on TWY <b>K</b> → Turn Right onto <b>A16</b> → Turn Right on <b>A</b> → Turn Left onto <b>R17</b> → <b>R17</b> → Turn Right on <b>M</b> → <b>M19</b> → Hold At Holding Point <b>RWY 16</b>	Route for RWY 16 Departure
CARGO TRANSITION 33L	CGO APRON → Turn Left on <b>D</b> → Turn Right onto <b>J</b> → Hold At Holding Point <b>RWY 33R</b> on TWY <b>J</b> → Turn Left on <b>C</b> → Turn Right on <b>G</b> → Hold At Holding Point <b>RWY 33L</b>	Route for RWY 33L Departure
CARGO TRANSITION 34	CGO APRON → Turn Left on <b>D</b> → Turn Right onto <b>J</b> → Hold At Holding Point <b>RWY 33R</b> on TWY <b>J</b> → <b>A8</b> → <b>R8</b> → Turn Left on <b>M</b> → <b>M5</b> → Hold At Holding Point <b>RWY 34</b>	Route for RWY 34 Departure

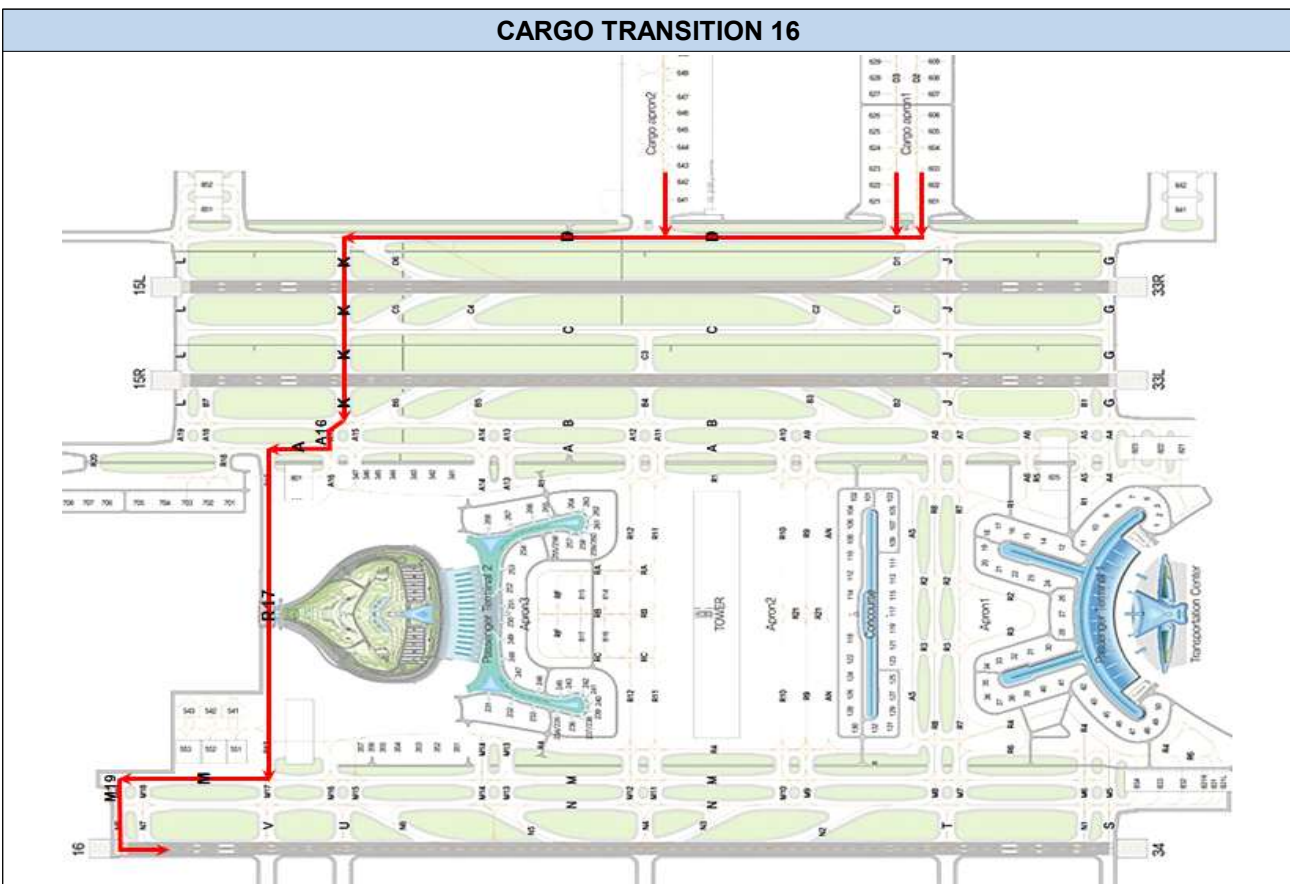
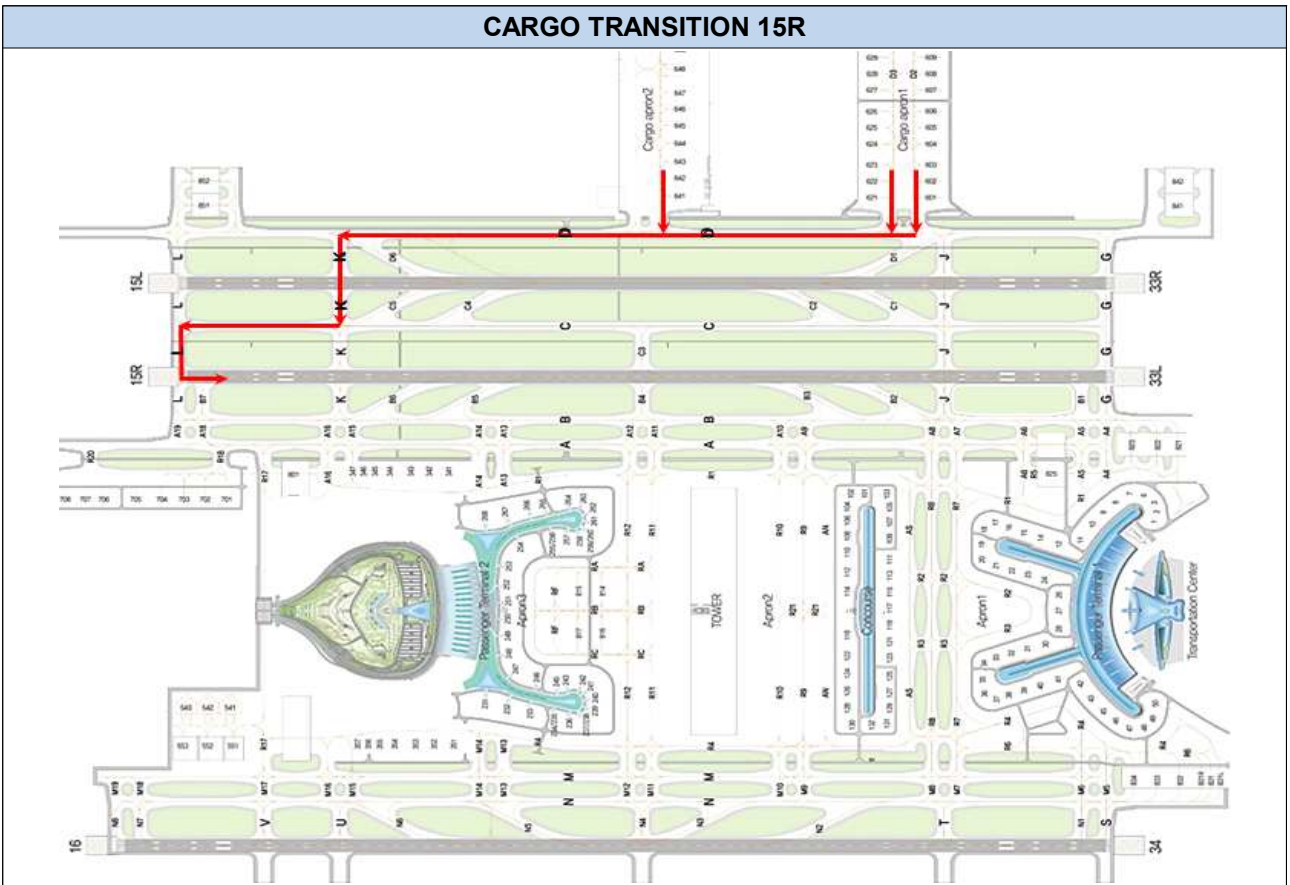
## 2.2 Arrival routes

Name	Taxi Route Details	Remarks
CARGO TRANSITION NORTH	Exit onto <b>N</b> → Turn Left on <b>N</b> → Turn Right onto <b>M11</b> → <b>R11</b> → Turn Left on <b>A</b> → Turn Right onto <b>A15</b> → <b>K</b> → Hold At Holding Point <b>RWY 15R</b> on TWY <b>K</b> → Turn Right on <b>D</b> → CGO APRON	Route for RWY 16 Arrival
CARGO TRANSITION SOUTH	Exit onto <b>N</b> → Turn Right on <b>N</b> → Turn Left onto <b>M11</b> → <b>R11</b> → Turn Right on <b>A</b> → Turn Left onto <b>A8</b> → <b>J</b> → Hold at Holding Point <b>RWY 33L</b> on <b>J</b> → Turn Left on <b>D</b> → CGO APRON	Route for RWY 34 Arrival

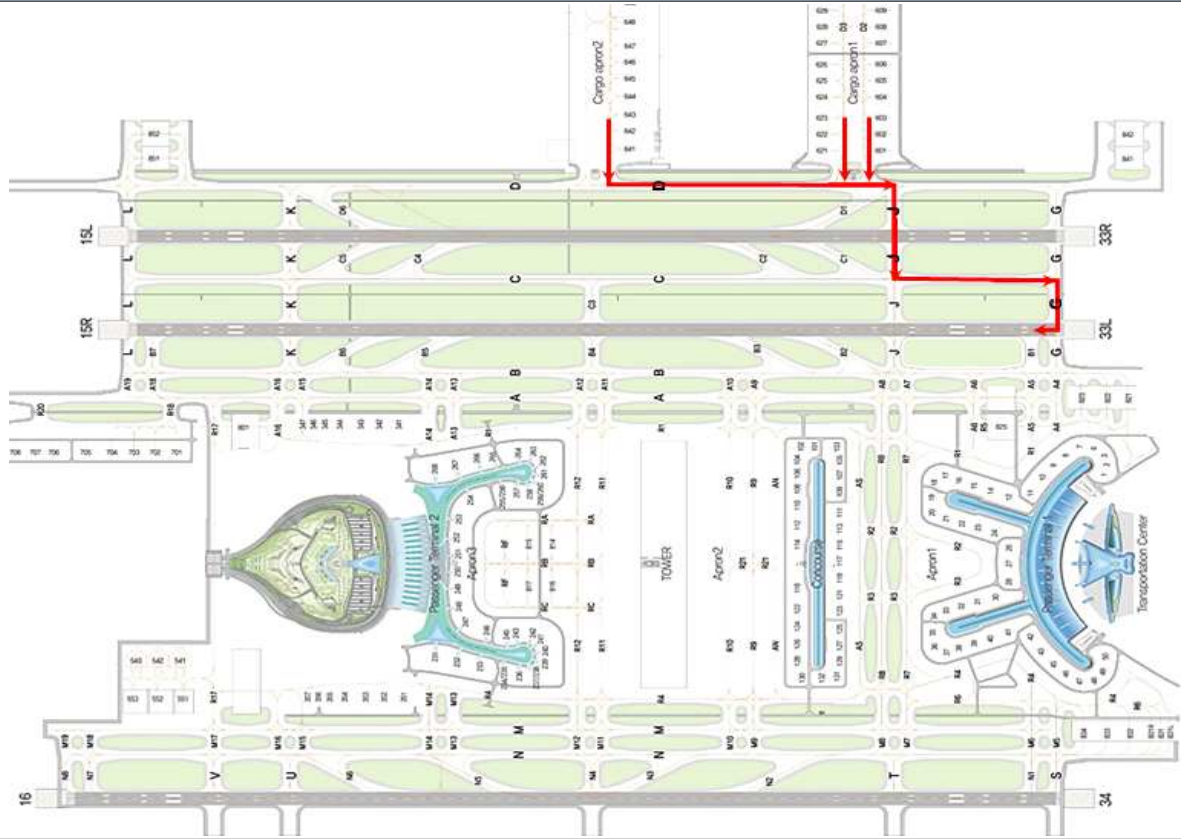
## 3. OPERATIONAL PROCEDURES

- 3.1 All cargo flight crews are strongly advised to plan their taxi route based on standard taxi route before taxi or landing.
- 3.2 ATC may use standard taxi route or 'Follow The Greens' on a tactical basis to maintain an efficient flow of ground operation. In either cases, taxiway center line lights will be operated based on standard taxi route.
- 3.3 If for any reason, flight crew unable to comply or understand the standard taxi route instructions, timely request should be made for alternate taxi instruction.
- 3.4 The following ATC phraseology will be used when issue standard taxi route instructions.
- *(Call sign)*, TAXI VIA *(STR NAME)*, HOLD SHORT OF RWY 15L.
- 3.5 In case ATC cancels Standard Taxi Route for any concerned aircraft, the following ATC phraseology will be used.
- *(Call sign)*, CANCEL *(STR NAME)*, TAXI VIA *(detailed taxi instructions)* OR FOLLOW THE GREENS TO *(clearance limit)*.

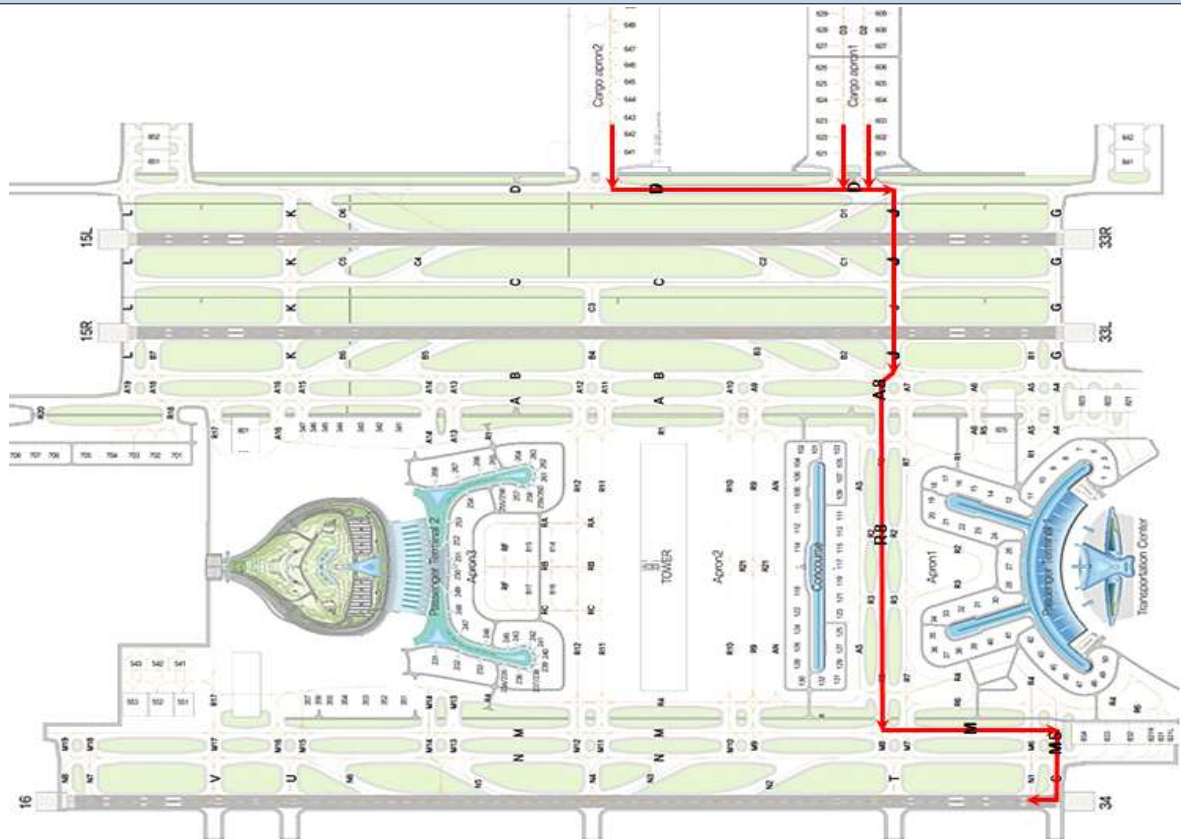
4. DIAGRAMS OF STANDARD TAXI ROUTE FOR CARGO FLIGHT



### CARGO TRANSITION 33L

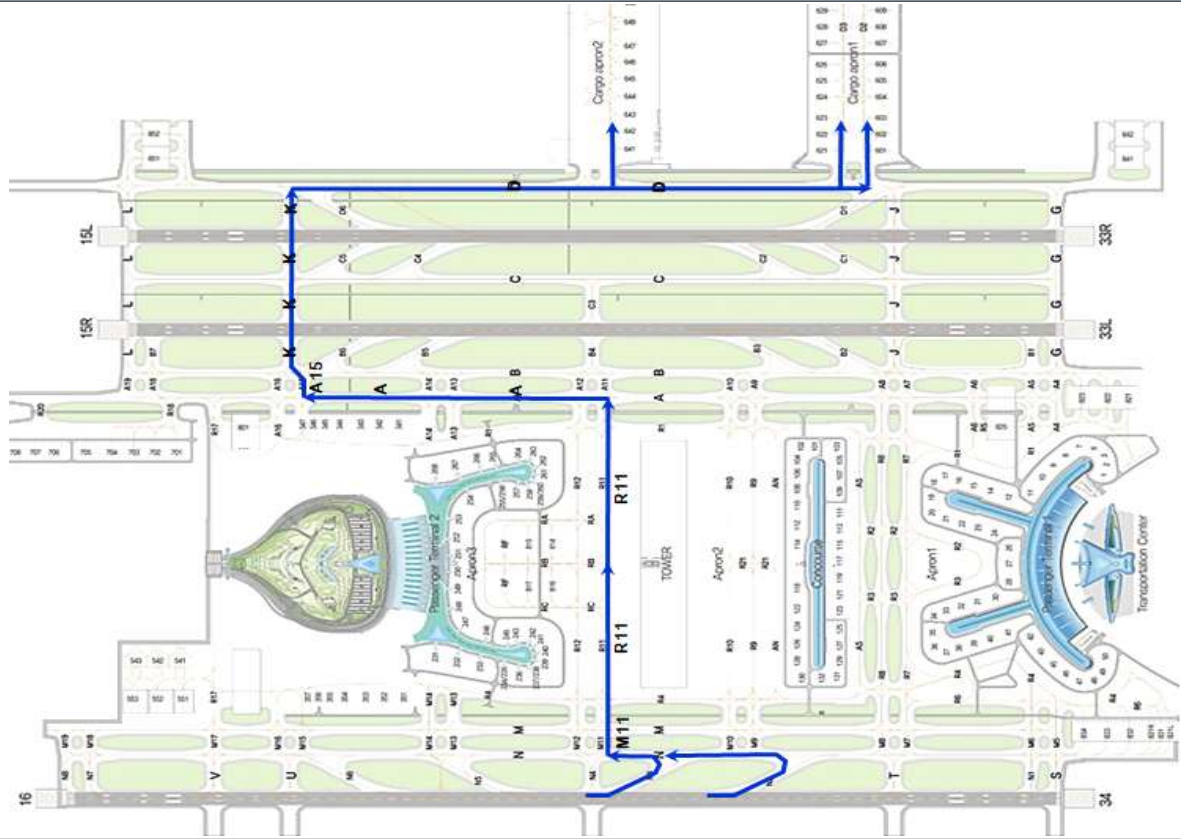


### CARGO TRANSITION 34

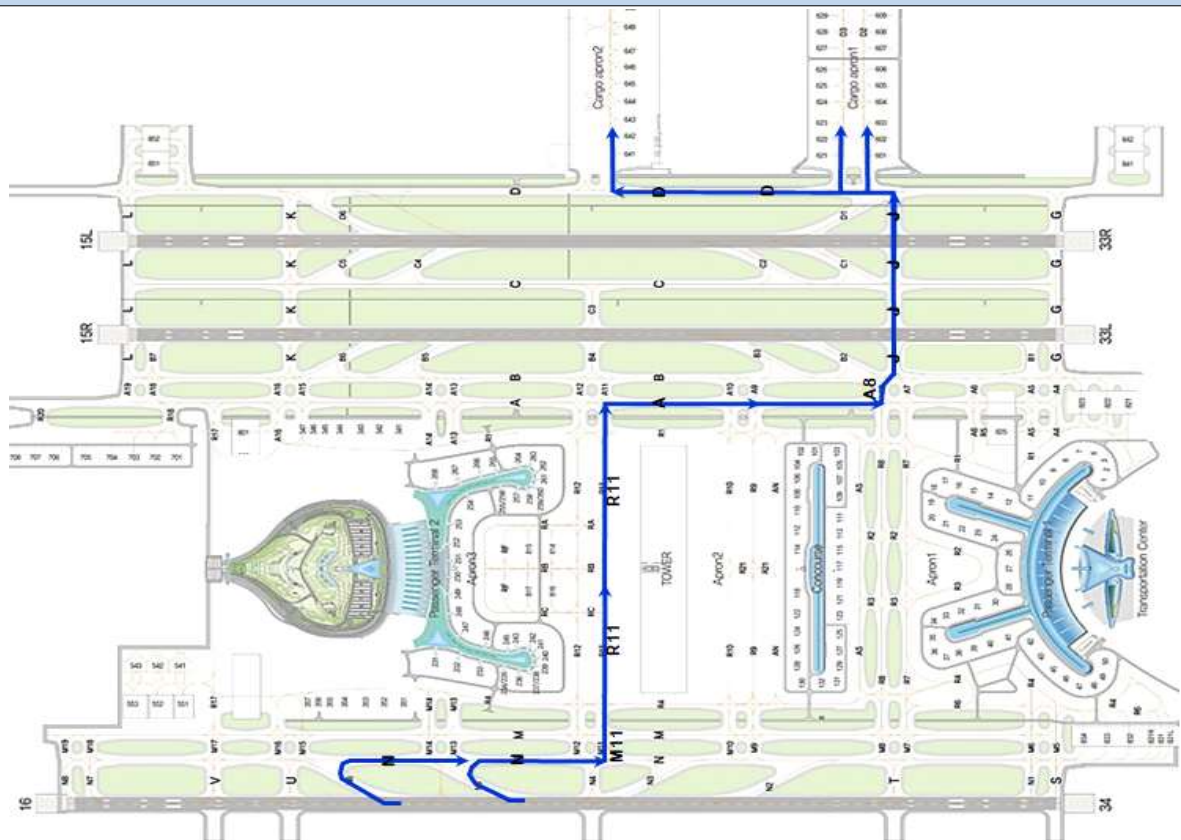




### CARGO TRANSITION NORTH



### CARGO TRANSITION SOUTH



**5. EXPIRY DATE**

This AIC expires 17 JUN 2021.

*(AIC 4/21 is hereby superseded)*